

Welcome to our latest Blue List packed full of interesting items from Great Britain and the Channel Islands. Products may sell quickly so don't miss out, call today on:

01303 762078

or visit our website at

www.thestampcentre.co.uk

Benham House, North Close, Shorncliffe Ind. Est., Folkestone, Kent CT20 3UH



1839 Cover from Coldstream to Edinburgh with 'Coldstream Penny Post' & 'Addl 1/2d' marks on frnt.

£95 GBSL1839U1



1840 1d Black, plate 1b, 3 margins, used on a folded entire, tied with lovely red MX cancel. SG2

£175 GB0002UCVR5



1866 9d Straw, pl 4, horiz pair (right wing marginal), on folded entire London to Florence. SG98

£550 GB0098U2CVR



1890 Jubilee of Penny Post stationery envelope & postcard, both with special Kensington cancels.

£60 GGB1890U2



1935 Jubilee + 1/2d definitive, used airmail FDC from Glasgow to BPO Tangier. SG453-56

£175 GB0453UFDC3



1936 1-1/2d Block of 4, used on tidy, plain, addressed FDC. SG459 **£50 GB0459U4FDC**

SALE - SEE PAGES 38 - 54



1801 Stampless entire sent Chertsey to London with black 'Chertsey 1d' & manuscript rate marks.

£30 GBSL1801U



1802 Folded entire from London to Wakefield, London dispatch mark on rev, manuscript rate front.

£15 GBSL1802U1



1806 Folded entire from Portsmouth to Waddington. Sent by Lt Col William Shipley (later an MP).

£60 GBSL1806U1



1812 Folded entire from Birmingham to Bewdley. Red dispatch mark on front. **£8 GBSL1812U1**



1818 Stampless entire with black Berkley 2d unpaid & '2' rate stamps on front, red 12 oclock rev.

£50 GBSL1818U



1822 Folded entire from Edinburgh to Paris via London. Edinburgh dispatch, 'Paid at' noon duty.

£45 GBSL1822U1



1825 Edinburgh local folded entire, 'Castle Street' box stamp front, date stamp reverse.

£20 GBSL1825U1



1828 Folded entire from Glasgow to Queensferry, Glasgow outgoing, 'Addl 1/2' & rate marks.

£10 GBSL1828U1



1828 Free frank cover from London to Dublin, red crowned mark front. **£12 GBSL1828U2**



1829 London local folded entire, large '1' handstamp rate mark (front) & cds on reverse.
£6 GBSL1829U1



1830 Folded entire from Newcastle to Alnwick. Blue dispatch (rev) and manuscript rate (front).
£10 GBSL1830U1



1830 Folded entire from Newcastle to Alnwick. Green dispatch (rev) and manuscript rate (frnt).
£15 GBSL1830U2



1830 London local folded entire, with 'Tower Street' 2d post, '2' rate & chief office marks.
£75 GBSL1830U3



1830 Folded entire from Plymouth to Rome via London & Pont Beauvoisin. 'Plymouth Penny Post' mark. **£75 GBSL1830U4**



1831 Folded entire from London to Lancaster, London red single ring 'Paid' mark on front.
£8 GBSL1831U1



1832 Edinburgh local folded entire, '1' rate & box date marks, contents refer to Elgin railway.
£20 GBSL1832U1



1832 Folded entire from Scariff (IRE) to London. Sent by Lt Sandwith, complains of a mob.

£65 GBSL1832U2



1833 Glasgow local folded entire, '1/2' & manuscript rate, MX dispatch & black arrival marks.

£8 GBSL1833U1



1833 London local folded entire, manuscript rate on front, evening post mark on reverse.

£8 GBSL1833U2



1835 Folded entire from Sterling to Edinburgh. Blue dispatch & red receipt marks, and 'Addl 1/2.'

£20 GBSL1835U1



1835 Folded entire from Liverpool to Cognac via London & Calais. Brandy-related contents.

£55 GBSL1835U2



1836 Folded entire from Monmouth to Norfolk, black dispatch mark on reverse, manuscript rate.

£8 GBSL1836U1



1836 Folded entire from London to Shaftesbury, black date mark on reverse, manuscript rate front.

£6 GBSL1836U2



1836 Folded entire from London to Edinburgh. Handstamp '1' rate mark on front, disp & rect rev.

£10 GBSL1836U3



1838 Folded entire from Dewsbury to Rotherham with black dispatch mark on rev & manuscript rate.

£6 GBSL1838U1



1838 London local cover with red 'box' dispatch & 'Piccadilly 2D Paid' marks. **£15 GBSL1838U2**



1838 Folded entire from Edinburgh to Alex Cowan (paper maker) at Penicuik (here Pennycuik).

£10 GBSL1838U3



1838 London local folded entire, blue 'TP Croydon HS' (highstreet) & black '2' rate handstamp.

£20 GBSL1838U4



1839 Cover from Coldstream to Edinburgh with 'Coldstream Penny Post' & 'Addl 1/2d' marks on frnt.

£95 GBSL1839U1



1839 Folded entire from Newton Abbot to Buckingham, dispatch mark on rev, manuscript rate front. **£6 GBSL1839U2**



1840 Cover from York to Hartlepool, with black dispatch and red 'Pd. 1' marks. **£6 GBSL1840U1**



1841 Cover from Dumfries to Gatehouse with red dispatch + '1' rate marks & black boxed arrival.

£35 GBSL1841U1



1841 Chippenham local folded entire with red box date mark & 2 manuscript rates. **£6 GBSL1841U2**



1841 Cover from Vere St (London) to Perth via Edinburgh. Red maltese 'VS' paid stamp on front.

£45 GBSL1841U3



1843 London local folded entire on SPCK letterhead, 2 red boxed carrier stamps & red rate mark.

£12 GBSL1843U1



1843 Folded entire from Langbourn to Newbury via Hungerford. Disp & trans on front, arrival rear.

£15 GBSL1843U2



1843 Folded entire from Newcastle to Kirkby Stephen. Black dispatch mark on front.

£8 GBSL1843U3



1844 Mourning folded entire from Southampton to Exeter. Black dispatch and receipt marks.

£8 GBSL1844U1



1845 Folded entire from Northampton to Leister. 'PD1' Red stamp on front, disp & rcpt on rev.

£15 GBSL1845U1



1845 Folded entire (will registry) from London to Westmoreland. Red London crowned 'PAID' mark.

£10 GBSL1845U2



1845 Folded entire from London to Shafesbury, London MX dispatch on reverse. **£6 GBSL1845U3**



1845 Folded entire from Kellington to Bridgewater (Bridgewater). More unusual cancels.

£15 GBSL1845U4



1847 Folded entire from Lancaster to Keswick via Kendal. Court summons. **£6 GBSL1847U1**



1847 Folded entire from Hull to Beverley. Blue dispatch & receipt marks + 1d red rate handstamp.

£20 GBSL1847U2



1847 Folded entire from Bradford to Sheffield via Warefield. Blue dispatch and receipt & red Paid

£20 GBSL1847U3



1851 London internal with 'LOMB-ST / 1d PAID' & red 10pm night charge marks. Railway related.

£20 GBSL1851U1



1854 Folded entire from Gateshead to Paris via London and Calais. **£15 GBSL1854U1**



1854 Pair of folded entires from Newcastle to Paris, both black and red dispatch marks.

£25 GBSL1854U2



1841 1d Red-brown, 3 margin example from black plate 9, used on folded cover with Leeds MX. SG7

£175 GB0007UCVR



1841 1d Deep red-brown, printed from black plate 11, near 3 margins, used on cover. SG7

£95 GB0007UCVR1



1845 1d Red-brown / very blue ppr, 2 margins, used on cover with 1844 black cancel. SG8a

£15 GB0008AUCVR



1851 1d Red-brown / very blue ppr, 4 margins, used on mourning cover with 1844 black cancel. SG8a

£20 GB0008AUCVR1



1842 1d Red-brown / very blue ppr, 2 margins, used on folded entire with hollow black MX. SG8a

£150 GB0008AUCVR2



1842 1d Red-brown, 3 margin example used on folded entire with lovely black London MX cancel. SG8

£40 GB0008UCVR



1841 1d Red-brown, used on tidy cover with '11' in MX cancel, cat. £1,100. SG8

£125 GB0008UCVR11



1848 1d Red-brown, 2 margin exmpl retaining part marginal inscription, 1844 cancel on cover. SG8

£25 GB0008UCVR2



1846 1d Red-brown, horiz pair, used on entire with black 1844 cancels. 1 Stamp damaged. SG8

£20 GB0008UCVR2X



1842 1d Red-brown, 4 margin example used on cover with Leeds black MX cancel. SG8

£250 GB0008UCVR3



1844 1d Red-brown, 2 margins on cover with black MX cancel & Brompton TP marks. SG8

£50 GB0008UCVR5



1844 1d Red-brown, 2 margins, used on cover with '6' in MX cancel, Lombard St disp on rev. SG8

£45 GB0008UCVR6



1849 1d Red-brown, 3 margins, used on cover from Leek to Southwell with 1844 PM in blue. SG8

£50 GB0008UCVR7



1851 1d Pale red-brown (worn plate), 3 margins, used on cover with 1844 PM in blue. SG9

£50 GB0009UCVR



1851 1d Deep red-brown, 2 margin, used on tidy cover with '1844' pmk in black. SG10

£35 GB0010UCVR



1847 1d Deep red-brown, cut close, used on cover with black 1844 cancel & 'Bathgate' box. SG10

£50 GB0010UCVR2



1850 1d Deep red-brown, lovely 4 margin example used on cover from Perth to Halifax. SG10

£20 GB0010UCVR4



1850 1d Deep red-brown, near 4 margins, used on folded entire from Dorchester to Yeovil. SG10

£10 GB0010UCVR3



1849 Strip of 3 x 2d pale-blue, used on cover to Kendal. SG13 **£150 GB0013U3CVR**



1842 1d Orange-brown (pl 20), 3 margins, black Norwich MX used on entire to Rochester. SG12

£150 GB0012UCVR



1854 2d Deep full-blue, plate 4, 2.5 margin example tied to folded letter. SG15 **£125 GB0015UCVRA**



1845 2d Deep full-blue, 4 margin example tied to tidy wrapper sent to the Bank of Scotland. SG15

£140 GB0015UCVR



1854 1d Red-brown / heavily blued ppr, perf 16, used with 'Rue End Street' local cancel. SG17

£50 GB0017UCVR



1856 2d Deep-blue / blued (pair), 4d rose-carmine, all used on cover to Canada-East. SG19, 66. All But 1x 2d damaged.

£100 GB0019UCVRX



1855 1d Red-brown, die II, perf 16, on cover from London to Beecks, 'Chancery Lane' mark. SG21

£45 GB0021UCVR



1863 1d, 4d Definitives mixed frank registered front & flap only, from London to Forres. SG22, 79

£15 GB0022UCVR2



1855 1d Red-brown, perf 14, used on cover from London to Edinburgh, MX dispatch on rev. SG22

£40 GB0022UCVR



1855 1d Red-brown die II, perf 14, on cover from Belfast to London used with 'spoon' cancel. SG29

£40 GB0029UCVR



1855 1d Red-brown, die II, perf 14, used on tidy cover from London to Plymouth. SG24

£25 GB0024UCVR



1857 2d Blue, pl 6, on entire from Belfast to London via Dublin, used with 'spoon' cancel. SG35

£90 GB0035UCVR



1858 2d Blue, pl5 used on folded entire from Belfast to London (thimble rect mk) via Dublin. SG34

£75 GB0034UCVR



1861 1d Rose-red, die II, white ppr, on cover from Huddersfield to Lees (scarce mark). SG36

£10 GB0036UCVR



1858 1d Rose-red, perf 14, used on cover with York 'spoon' cancel to London. SG40 **£50 GB0040UCVR2**



1859 1d Brown-red / unblued, wmk large crown, perf 14, well-centered, used on tidy cover. SG37
£600 GB0037UCVR



1862 1d, 6d Mixed frank cover London to Genoa with commrl endsmnt & London 'thimble.' SG40, 69
£15 GB0040UCVR4



1863 1d Rose-red, perf 14, used on cover with Northampton 'spoon' cancel to Stourbridge. SG40
£40 GB0040UCVR3



1861 1d, 4d Mixed frank cover from London to Milan, marginal selvage used to seal. SG42, 66a
£175 GB0042UCVR1



1862 1d Rose-red, die II, plate 50, fine used on cover from London to Hatings. SG42 **£20 GB0042UCVR**



1863 Pair of matched folded entires, sent to the Inspector of Nuisances & Board of Works. SG42
£40 GB0042UCVR2



1867 1d Rose-red, pl 76, on folded entire with contents relating to Pennsylvania (debt). SG43
£15 GB0043UCVR



1865 1d, 6d Mixed frank cover from London to Zurich via Calais, St Gallen & Basil. SG43, 97

£75 GB0043UCVR1



1869 1d Lake-red, used on tidy cover, tied with in-period, experiemental Azemar cancel. SG44

£195 GB0044UCVR



1874 1d (pl 103), 6d (pl 13, WM) Mixed frank folded
entire from London to Rome. SG43, 147

£50 GB0043UCVR2



1867 1d Lake-red, pl 76, used on cover from East
York to Halifax. SG44 **£6 GB0044UCVR2**

alifax. SG44 **£6 GB0044UCVR2**



1869 1d Lake-red, pl 95, used on cover from Belfast to London via Moneymore (trans rev). SG44

£15 GB0044UCVR1



1873 1d, 3d Mixed frank part cover from London to Rhode Is via Queenstown & NYC. SG44, 103

£50 GB0044UCVR4



1870 1d Lake-red, pl 184, used on folded entire
from Newcastle to Whitby. SG44 **£6 GB0044UCVR3**

£65 GB0045GUCVR



1859 2d Blue (pl 7) used on entire from Belfast to London via Dublin with 'spoon' cancel. SG45

£65 GB0045GUCVR



1875 1/2d Rose-red (pl 12), vert misperf, used on tidy cover from Johnston to Kilbareham. SG48var

£50 GB0048UVCVR



1872 1/2d Plates 4 & 5, used on part local Broseley cover. SG48 **£10 GB0048UDCVR**



1862 4d Rose, used on folded entire from London to Nice via Calais & Paris (transit + PD) SG66a

£70 GB0066AUCVR



1881 1/2d Vert pair & single (from same strip), pl 6, used on cover from London to Colyton. SG49

£25 GB0049UFCVR



1860 6d Lilac (wing marginal) used on tidy cover from London to Genoa, red 'PD' mark front. SG68

£75 GB0068UCVR1



1860 6d Lilac (cut down wing marginal) used on cover from Shrewsbury to Jalna, mil interest. SG68

£85 GB0068UCVR



1861 6d Pale-lilac, horiz pair, used on cover from Kirkcaldy to Alexandria (Egypt). SG70

£200 GB0070U2CVR



1862 1/- Green, used on entire from London to Finland, various marks inc 'Per Aachen.' SG72

£105 GB0072UCVR



1861 1/- Pale-green, horiz pair used on entire London to Corfu via Ostend, Aachen & Trieste. SG73

£300 GB0073U2CVR



1875 4d Dull-vermilion, pl 14, used on cover from London to Genes (IT) 'via France.' SG93

£60 GB0093UCVR



1864 4d Bright-red, type B, horiz pair, used on cover from London to the HMS Satellite (SA). SG81

£250 GB0081U2CVR



1868 4d Deep-vermilion, pl 9, used on mourning cover (front only) to Natal by steamer Asia. SG95

£45 GB0095UCVR



1867 4d, 1/- On mourning cover (front only) from Edinburgh to Durban (Natal). SG93, 100

£75 GB0093UCVR2



1865 6d Lilac, pl 5, used on compact cover (missing flap) to Florence. SG97

£45 GB0097UCVR1



1869 6d Lilac, pl 5, wing-marginal, used on tidy cover to Stockholm. SG97

£55 GB0097UCVR



1866 9d Straw, pl 4, horiz pair (right wing marginal), on folded entire London to Florence. SG98

£550 GB0098U2CVR



1868 6d Dull-violet, pl 8, used on entire from London to Bari (IT). SG108 **£95 GB0108UCVR**



1870 3d Rose, pl 5, 2 axamples (seperated pair) on cover from London to Rome via Paris. SG103

£45 GB0103UCVR



1870 6d Mauve, pl 9, on tidy cover from Hull to Florence via London. SG109 **£60 GB0109UCVR1**



1869 6d Mauve, pl 8, horiz strip of 3, on cover from London to Messina nia Naples. SG109

£120 GB0109UCVR



1869 6d Mauve (pl 8) x2 & 1/- green (pl 4), used on cover from London to Messine (IT). SG109, 117

£120 GB0109UCVR3



1872 6d Mauve, pl 9, wing marginal used on cover from London to Paris. SG109 **£45 GB0109UCVR2**



1870 6d Mauve, pl 9, on tidy cover from London to Washington, DC. SG109 **£45 GB0109UCVR4**



1869 1/- Green, pl 4, 3 examples used on cover from London to Messina (IT), unusual rate. SG117

£125 GB0117UCVR



1875 2-1/2d Rosy-mauve, plate 2, used on tidy entire, cat. £175. SG139 **£50 GB0139UCVR**



1874 6d Grey (pl 12), used on cover from Newcastle to Civita Vecchi via Belgium. SG125
£130 GB0125UCVR



1876 2-1/2d Rosy-mauve, pl 3, used on mourning cover from Northampton to NJ via NYC. SG141
£40 GB0141UCVR1



1876 2-1/2d Rosy-mauve, pl 3, used on cover from London to NYC (red incoming mark on rev). SG141
£40 GB0141UCVR



1876 2-1/2d Rosy-mauve, pl 5, used on compact cover from London to Sweden. SG141
£30 GB0141UCVR3



1876 2-1/2d Rosy-mauve, pl 4, used on compact cover from London to Sweden. SG141
£30 GB0141UCVR2



1876 2-1/2d Rosy-mauve, pl 6, used on compact cover from London to Sweden. SG141
£30 GB0141UCVR4



1874 3d Pale-rose, pl 15, used on tidy cover from London to Pau via Calais. SG144 **£35 GB0144UCVR**



1875 6d Grey, pl 14, wing marginal, used on entire from London to Turin. SG147 **£40 GB0147UCVR**



1875 3d Pale-rose, pl 17, wing marginal, on cover Leamington to Firenze, NPB cds on rev. SG144
£45 GB0144UCVR1



1880 1d Venetian-red, used on lovely illustrated envelope from Ipswich to London. SG166
£35 GB0166UCVR1



1880 1d Venetian-red, used on cover from York to Leeds, annotation. SG166 **£20 GB0166UCVR**



1896 1d Lilac, used on cover Clevedon to Edinburgh, scarce 'Carlisle Sorting Tender' mark. SG172 **£25 GB0172UCVR**



1880 1d Venetian-red, used on mourning cover (with contents) from Brighton to London. SG166
£10 GB0166UCVR2



1902 1d Lilac, used on cover (with contents) from Newport to Minehead (cds on rev). SG172
£6 GB0172UCVR1



1884 1d Lilac, used on cover (with contents in Welsh) from Bangor to Liverpool. SG172
£10 GB0172UCVR10



1893 1d Lilac, used on cover to Penrith with scarce 'Lazonby H87' cancel. SG172 **£15 GB0172UCVR2**



1886 1d Lilac, used on mourning cover from Youghal (IRE) to Bristol. SG172 **£10 GB0172UCVR4**



1901 1d Lilac, used on cover to Penrith with 'filled X BEXP' Prestwich cancel. SG172 **£10 GB0172UCVR3**



1892 1d Lilac, used on tidy London local cover. SG172 **£5 GB0172UCVR6**



1893 1d Lilac, used on cover from Hammersmith to Penrith. SG172 **£5 GB0172UCVR5**



1886 1d Lilac, on 2d registered stationery cover from Dorwen (Cwmtrwrch) to Llangollen. SG172 **£25 GB0172UCVR8**



1886 2 Items from Nottingham to London concerning the Nottingham Goose Fair. SG172, 187 **£30 GB0172UCVR7**



1900 A lot of 8 covers (most stampless) relating to the CIV during the Boer war. SG172 **£75 GB0172UCVR9**



1895 1d Deep=purple. used on cover with scarce 'Tebay F78' cancel to Penrith. SG173

£15 GB0173UCVR



1901 1d Mauve, used on cover with contents signed Thomas Whittaker (MP active during WWI). SG174

£40 GB0174UCVR



1900 1d Deep-purple. used on cover from Shap to Penrith. SG173 **£6 GB0173UCVR1**



1885 2-1/2d Lilac, used on cover from Birmingham to Seine-et-Oise via Calais & Paris. SG190

£15 GB0190UCVR



1897 Stationery 2d registration cover, uprated with 1d definitif, used. SG174 **£22 GB0174UCVR1**



1886 2-1/2d Lilac perfin, used on entire to Germany via FR, NL. Commercial endorsement rev. SG190

£30 GB0190UCVR3



1884 2-1/2d Lilac (x2) used on cover to the Adams Vervine Asylum (Massachusetts). SG190

£30 GB0190UCVR2



1896 1/2d Vermillion, used on unsealed cover from Stranoogen (IRE) to Zurich. SG197

£20 GB0197UCVR



1890 1/2d Vermillion, used on folded commercial entire from Grangemouth to Skien (NO). SG197

£10 GB0197UCVR1



1842 1d Pink embossed postal stationery cover, used with black MX, 'Pall-Mall' & 'More to Pay.'

£25 GBG1842U



1895 2d Registered stationery envelope, bearing 2-1/2d Jubilee, sent Liverpool to Germany. SG201

£25 GB0201UCVR



1859 1d, 6d Scarce mixed frank front from Liverpool to London with 2 registration marks. SG22, 70.

£30 GB0022UFR



1875-77 Two postal stationery postcards, used with different London head district office marks.

£10 GBG1875U2



1880s 2-1/2d Grey embossed postal stationery envelope, unused. **£8 GBG1880M**



1886 1d Pink embossed postal stationery cover, used with Hoster type IV experimental cancel.

£30 GBG1886U



Ca.1890 1/2d Embossed postal stationery envelope uprated with additional 3d embossed.

£30 GBG1890M



1890 1/2d Postal stationery card, used with special Penny Post Jubilee Guildhall cancel. **£20 GBG1890U**



1905 1/2d Blue-green, used on postcard with Birmingham type 2e cancel. SG216 **£4 GB0216UCVR**



1890 Jubilee of Penny Post stationery envelope & postcard, both with special Kensington cancels. **£60 GBG1890U2**



1898 1d Pink embossed postal stationery envelope used from Penrith to Pooley Bridge. **£5 GBG1898U**



1911 1/2d Dull blue-green, 2 examples used on cover with Portsmouth roller cancel. SG215 **£4 GB0215U2CVR**



1907 1/2d Dull blue-green, used on postcard with scarce Egloskerry cancel. SG215 **£6 GB0215UCVR2**



1907 1/2d Definitive, used on humerous naval / romantic postcard. SG215 **£6 GB0215UCVR**



1909 1/2d Pale yellowish-green, horiz pair, used on cover with London roller cancel. SG217 **£6 GB0217U2CVR**



1907 1/2d Definitive, used on picture postcard of Rozel Harbour from St Aubin to Belgium. SG217

£10 GB0217UCVR



1911 1/2d Deep dull-green, Harrison pnt, vert pair, used on cover. SG269 **£25 GB0269U2CVR**



1905 1/2d Defn, used on humorous postcard from Steeple Aston, missent, re-directed. SG217

£15 GB0217UCVR2



1905 1/2d Defn on Aberdeen picture postcard, stamp moved to back, marked postage due. SG217

£16 GB0217UCVR1



1911 1/2d Yellowish-green, used on picture postcard with scarce 'LEE.S.D.S.E' cancel. SG218

£5 GB0218UCVR2



1905 1/2d Yellowish-green, used on picture postcard with Spilsby type 1a cancel. SG218

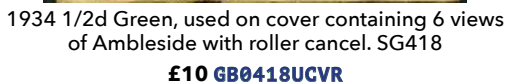
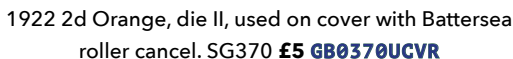
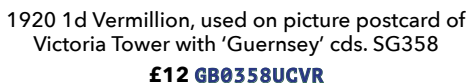
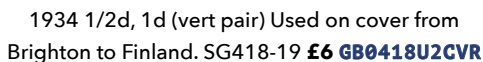
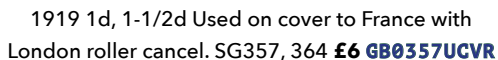
£5 GB0218UCVR1



1910 1/2d Dull yellow-green, Harrison pnt, vert pair used on cover. SG267 **£10 GB0267U2CVR**



1911 1d Bright-scarlet, used on postcard depicting arms of KGV. SG220 **£6 GB0220UCVR**





1929 2d (Defin) & 1/2d (UPU) Used on commercial cover to Sweden. SG421, 434 **£5 GB0421UCVR**



1936 1-1/2d Used on tidy commercial postcard from London to Sweden with company mark. SG441 **£5 GB0441UCVR**



1924 1-1/2d Wembley, block of 4 used on tidy cover (not first day). SG431 **£50 GB0431U4CVR**



1929 1-1/2d UPU, cds used on tidy cover. SG436 **£4 GB0436UCVR**



1929 1/2d, 1d (vert pair) UPU, used on cover from Sandown (IoW) to Sweden. SG434-35 **£8 GB0434UCVR**



1934 1-1/2d Red-brown, horiz pair, used on plain FDC, 10gr Austrian postage due. SG441 **£25 GB0441U2FDC**



1937 1/2d Horizontal pair & coil test label, used on 'Reid' cover in Wales. SG439 **£8 GB0439UCVR**



1935 1-1/2d (x2) & 3d Used on commercial airmail cover to Lahore. SG441, 444 **£5 GB0441UCVR1**



1930 1-1/2d Meter post cover from Gamages dept store with Olympia Motor Show advert label.

£15 GB0456Z1U



1935 4d Used on registered FDC to Birmingham, along with additional 1/2d definitive. SG439, 445

£40 GB0445UFDC



1935 Jubilee + 1/2d definitive, used airmail FDC from Glasgow to BPO Tangier. SG453-56

£175 GB0453UFDC3



1937 Pair of KGV registered stationery covers, uprated with 1/2d, 1-1/2d KEVIII defins. SG457+59

£60 GB0457UCVR2



1936 2d Orange, horiz pair used on special first flight Doncaster - Amsterdam cover. SG442

£50 GB0442U2CVR



1935 Jubilee, used on a registered airmail FDC, 3 stamps affected by crayon. SG453-56

£75 GB0453UFDC1



1936 1-1/2d & 2-1/2d Jubilee, used on commercial airmail cover to Sweden. SG455, 456

£6 GB0455UCVR



1937 1/2d (Horiz pair), 1-1/2d KEVIII defins, used on commercial cover from Glasgow. SG457, 459

£4 GB0457UCVR3



1936 1-1/2d KEVIII Definitive, used on plain FDC from Edinburgh. SG459 **£10 GB0459UFDC1**



1936 1-1/2d Block of 4, used on tidy, plain, addressed FDC. SG459 **£50 GB0459U4FDC**



1937 Coronation, used on illustrated, addressed FDC. SG461 **£20 GB0461UFDC**



1937 1/2d London Stamp Expo cover with air & expo labels + special cachet / cds. SG462 **£40 GB0462UCVR**



1937 1/2d, 1d, 2-1/2d Combination FDC with small cachet from Cambridge. SG462-63+66 **£35 GB0462UFDC**



1939 1d KGV postal stationery postcard to France, franked with 30 & 60c postage dues. Centre fold. **£6 GB0456Z2U**



1947 1/2d Green, used on cover from Kirkbean to USA, with special John Paul Jones cachet. SG462 **£10 GB0462UCVR1**



1937 1/2d, 1d, 2-1/2d On pair of matched FDCs with large cachets from Nottingham. SG462-63+66 **£30 GB0462UFDC2**



1939 2x1-1/2d (KGVI) & 1/- (KGV) PanAm 'northern route' first flight cover (second leg). SG449+64

£25 GB0464U2CVR



1937 1-1/2d Red-brown, used on tidy FDC from Mill Hill, 'First Day Cover' stamp. SG464

£15 GB0464UFDC



1938 1-1/2d Red-brown, used on mourning cover with scarce Clitheroe Lancs roller cancel. SG464

£5 GB0464UCVR



1940 3d Violet, used on censored cover to the RX postal message scheme. SG467 **£10 GB0467UCVR**



1938 2d, 3d Definitives, used on a pair of reasonably well matched plain FDCs. SG465+467

£20 GB0465UFDC2



1944 2-1/2d, 6d Defins on domestic express cover with 2 different PO handstamps. SG470+89

£20 GB0470UCVR



1938 4d, 5d Combination registered FDC with small cachet - scarce. SG468-69 **£50 GB0468UFDC**



1945 9d-10d & 1/- Definitives, used on 4 covers with VJ Day 'Vicotry Bell' cancels. SG472-74+75

£20 GB0472U4CVR



1953 1/- Bistre-brown, used on forces airmail cover to Singapore with FPO cds. SG475

£10 GB0475UCVR1



1951 1/- Bistre-brown, used on airmail cover (with contents) to Brazil. SG475 **£5 GB0475UCVR**



1941 1d Pale-scarlet, plain addressed FDC. SG486

£15 GB0486UFDC



1940 Stamp cent, used on registered addressed FDC from Worcester Park, crayon. SG479-84

£15 GB0479UFDC1



1946 Peace, used on FLEET MAIL FDC, carried by HMS Cormorant to Gibraltar. SG491-92

£120 GB0491UFDC3



1948 Silver Wedding pair, used on plain, unaddressed FDC, neither stamp fully tied.

SG493-94 **£40 GB0493UFDC1**



1948 £1 Silver wedding, used (not first day) on tidy, compact cover to Canada. SG494 **£25 GB0494UCVR**



1948 £1 Silver Wedding, used on (non FD) registered cover to the HMS St Kitts. SG494

£30 GB0494UCVR1



1949 UPU used on 4 plain addressed FDCs from Kirkcaldy. SG499-502 **£15 GB0499UFDC4**



1953 1d Light-ultra, horiz pair, used on pictorial postcard from Guildford to Christchurch. SG504 **£8 GB0504UCVR**



1951 1d, 1-1/2d Definitives used (along with earlier 1/2d) on plain FDC for London. SG485, 504-05 **£5 GB0504UFDC**



1950 4d Light ultra, used on tidy plain FDC. SG508 **£20 GB0508UFDC**



1951 Festival of Britain, used on matched pair of plain FDCs from London. SG513-14 **£8 GB0513U2FDC**



1952 1-1/2d, 2-1/2d Combination addressed FDC with pillar box cachet. SG517, 519 **£14 GB0517UFDC**



1953 Coronation used on illustrated FDC from London. SG532-35 **£25 GB0532UFDC**



1953 2-1/2d Coronation used on illustrated FDC from Uckfield with appealing insert. SG532

£11 GB0532UFDC1



1953 Coronation used on illustrated airmail FDC from London. SG532-35 **£30 GB0532UFDC4**



1961 Special ann flight cover Hendon-Windsor-London with special cancel & BEA label. SG570, 623B **£10 GB0570UCVR**



1961 9d Bronze-green, used on first day recorded delivery service cover with label, rust. SG582 **£85 GB0582UCVR**



1965 3d Booklet pane used on plain addressed FDC (6/12/65), scarce. SG6151 **£60 GB0615LUFDC**



1963 6d Paris Conference illustrated FDC, with special Dover packet PMK. SG636 **£12 GB0636UFDC**



1963 Nature week, used on illustrated FDC from London. SG637-38 **£15 GB0637UFDC**



1963 Lifeboat conf., tidy illustrated FDC. SG639-41 **£14 GB0639UFDC**



1963 Lifeboat conference, used on illustrated FDC from London - all are cyl examples. SG639-41

£35 GB0639UFDC1



1964 6d Shakespeare, used on BEA first flight cover to Frankfurt with special BEA cachet. SG647

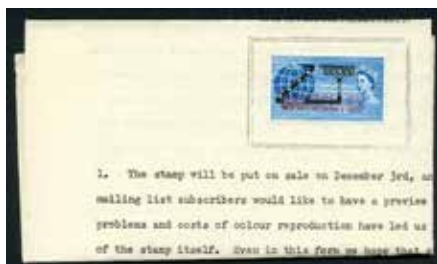
£10 GB0647UCVR



1966 Birds (se-tenant) used on Philart illustrated FDC from Brighton. SG696a **£6 GB0696AUFDC**



1967 Christmas, used on double-dated FDC with printed address. SG756-58 **£12 GB0756UFDC**



1963 1/6d Cable on original bulletin No. 3 document, scarce as such. SG645 **£50 GB0645UDOC**



1966 4d World Cup, used on unaddressed illustrated FDC, additional added last day as hltrs.

SG693 £30 GB0693UFDC1



1970 4d Bright-vermillion, used on cover from Douglas with special MGP Races cancel. SG733

£5 GB0733UCVR



1981 14p Grey-blue, used on rail-themed postcard with Great Western 10p label first day. SGX902

£15 GBX0902UCVR



1959 1d Violet-blue (x3) & 4d blue (x3) used on cover from Australia to Kent. SGD47, D51

£25 GBD0047U3CVR



1956 2d Agate genuine bisect, used on cover at East Ham with additional handstamp. SGD49, 542

£95 GBD0049UCVR



1968 6d Purple & PD handstamp, on unfranked commercial cover to the Bata Shoe Co. SGD73

£6 GBD0073UCVR



1971 1d Deep reddish-purple, horiz pair, used on reverse of cover from Sweden to Essex. SGD78

£9 GBD0078UCVR



1948 Liberation used on plain combination FDC from Guernsey (stamps not tied). SGC11-2

£6 GBRCI0001UFDC2



1948 Liberation, used on pair of matched plain FDCs from Jersey. SGC11-2

£10 GBRCI0001UFDC3



1948 Liberation, used on pair of matched plain FDCs from Guernsey. SGC11-2 **£10 GBRCI0001UFDC4**

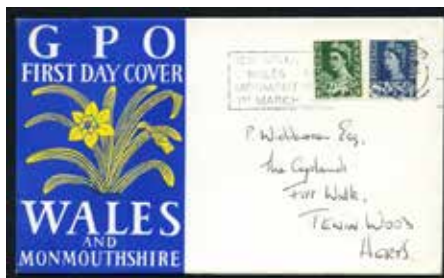


1948 2-1/2d Liberation used on FORCES AIRMAIL FPO cover to Surrey. SGC2 **£4 GBRCI0002UCVR**



1948 2-1/2d Liberation, used on plain FDC from London with 'nursing' slogan cancel. SGC2

£5 GBRCI0002UFDC



1967 Wales 9d & 1/6d, slogan cancel used on illustrated, hand addressed FDC. SGW4, W6

£25 GBRW0004UFDC



1963 1-1/2d (rev) & 3d Regional on genuine use cover from Herm to Sussex via Guernsey. HE45, SG7

£10 GBZHE0045UCVR



Herm 1960 World Refugee Year FDC. H61-66

£35 GBZHE0061UFDC



Jersey 1941 1/2d Bright-green, horiz. pair used on addressed FDC. SGJ1

£5 GBZJE0001U2FDC



Jersey 1941 1d Scarlet, used on addressed FDC.

SGJ2 **£5 GBZJE0002UFDC**



Jersey Lot of 16 'Paquebot' covers ranging from 1973-75 sent on visiting ships w special cachets.

£75 GBZJE9999UCVR



Jethou 1961 Europa ovpt issue, used on FDC to Guernsey (GU regional on front). J11-13

£4 GBZJT0011UFDC

SALE

SAVE 25%

on all items on pages 38 - 54



1875-80 2-1/2d Rosy-mauve / white ppr, all 3 plates, good to fine used. SG139

Was £100 Now £75

GB0139U3



1911 1d Carmine-red, die 1A, corner marginal control strip of 3, fresh mtd mint. SG327

Was £150 Now £112.50

GB0327MM2A11A



1946 3d Victory, S/46, cyl 4 control block of 6, u/m.
A rare block. SG492

Was £150 Now £112.50

GB0492M6S46



1971 Wales 3p, broad band left, block of 4, u/m.
SGW14var

Was £240 Now £180

GBRW0014VARM4



1840 1d Black, plate 18, fine used with red MX cancel. SG2
Was £200
Now £150
GB0002UR



1840 1d Black, nearly 3.5 margin example, black MX used, corner repaired. SG2
Was £65
Now £48.75
GB0002UX1



1840 2d Blue, 2 margins used, attractive space filler. Our choice of SG4-6
Was £65
Now £48.75
GB0004UBETC



1840 2d Deep, full-blue, 2.5, near 3 margin example, good to fine used with black MX. SG4
Was £150
Now £112.50
GB0004UC



1840 2d Deep, full-blue, 3 margins, red MX used, faulty. SG4
Was £65
Now £48.75
GB0004UX



1840 2d Blue, 2 margins, tied to attractive fragment with black MX cancel. SG5
Was £150
Now £112.50
GB0005UFR



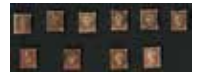
1840 2d Blue, 3 margins, good to fine used with black MX, thinned. SG5
Was £95
Now £71.25
GB0005UXA



GB1841 1d Red-brown, 4 margin example used with tidy '6' in MX cancel. SG8
Was £40
Now £30
GB0008M6U



1841 1d Red-brown, 2 margin example fine used with '9' MX cancel. SG8m
Was £15
Now £11.25
GB0008M9U



1841 A lot of 10 1ds used with numbered MX cancels (2-8, 10-11). Variable margins, clear cancels.
Was £340
Now £255
GB0008MU10



1844 1d Red-brown, 3 margin example fine used with 1844 type PM in blue. SG8p
Was £30
Now £22.50
GB0008PUBA



1841 1d Red-brown, horiz. pair, cut close, good used. SG8
Was £10
Now £7.50
GB0008U2X



1841 1d Red-brown / blued ppr, horiz pair, 4 margins, black MX used, closed tear at base. SG8
Was £15
Now £11.25
GB0008U2XA



1841 1d Red-brown, strip of 4 used with MX cancels. SG8
Was £45
Now £33.75
GB0008U4



1841 1d Red, all shades (less lake-red), good to fine used, a couple faulty. SG8-12 (less 11)
Was £90
Now £67.50
GB0008U5



1841 1d Red-brown, average example used with over-inked black MX cancel. SG8
Was £10
Now £7.50
GB0008U0



1841 2d Blue, 3 margin example, used with MX cancel. SG13-15 (our pick)
Was £25
Now £18.75
GB0013UA



1841-51 2d Blue, average used. SG14
Was £8
Now £6
GB0014UA



1855 1d Red-brown, die II, mtd mint, weak gum. SG29
Was £20
Now £15
GB0029MMX



1856-57 1d Pale red / rose, used block of 4 with minor faults. Our choice of SG38-41
Was £25
Now £18.75
GB0038U4XETC



1857-58 1d
Pale rose-red
(transitional), vert
pair used with lovely
'CRIEFF' cds cancels.
SG39, C9
Was £70
Now £52.50
GB0039U2



1857-58 1d Rose-
red, die II, perf
14, 'J&C Boyd'
underprint, used,
some faults. SG40
Was £15
Now £11.25
GB0040JU



1857 1d Rose-red,
strip of 5, good
used. SG40
Was £12
Now £9
GB0040U5



1864-79 1d Rose-
red, plate 221, block
of 4, mtd mint, of
which 2 are thinned.
SG43
Was £95
Now £71.25
GB0043M4XA



1864-79 1d Rose-
red, plate 158, u/m
with gum crackle.
SG43
Was £18
Now £13.50
GB0043MXA



1858-79 1d Rose-
red, plate 165, good
to fine cds used.
SG43
Was £12
Now £9
GB0043U165



1864-79 1d Rose-
red, plate 218, good
to fine cds used.
SG43
Was £60
Now £45
GB0043U219



1864-79 1d Rose-
red, plate 223, good
to fine used. SG43
Was £30
Now £22.50
GB0043U223



1864-79 1d Rose-
red, plate 224, good
to fine used. SG43
Was £25
Now £18.75
GB0043U224



1864-79 1d Lake-
red, plate 134, vert
pair, u/m. Gum
crackled. SG44
Was £35
Now £26.25
GB0044M2X134



1864-79 1d Lake-
red, plate 146, well-
centred example
used on tidy
fragment. SG44
Was £5
Now £3.75
GB0044U146FR



1858-76 2d Blue,
plate 8, fine used.
SG45
Was £20
Now £15
GB0045HU



1858-79 2d Deep-
blue, thin lines, plate
15, good mtd mint,
1 blunt corner, cat.
£525. SG47
Was £100
Now £75
GB0047MMCX



1858-79 2d Deep-
blue, thin lines, plate
14, good to fine
used. SG47
Was £10
Now £7.50
GB0047UB1



1870-79 1/2d Rose-
red, plate 6, vert
pair, good to fine
used. SG48
Was £12
Now £9
GB0048FU2



1870-79 1/2d Both
shades, plate 20,
good to fine used,
creases. SG49
Was £20
Now £15
GB0048TU2X



1870-79 1/2d Rose-
red, plate 12, good
to fine used. SG48
Was £5
Now £3.75
GB0048UL



1870-74 1-1/2d
Rose-red, both
plates (1,3), good to
fine used. SG51
Was £40
Now £30
GB0051U2



1870-74 1-1/2d
Rose-red, both
plates (1,3), average
used. SG51
Was £25
Now £18.75
GB0051U2A



1870 1-1/2d Rose-
red, used example
with 'Copestake'
imprint on rev. Minor
faults. SG51
Was £40
Now £30
GB0051UX1



1870-74 1-1/2d
Lake-red, plate 1,
good to fine used.
SG52

Was £30
Now £22.50
GB0052UA



1847-54 6d Mauve,
average used, cut
to shape & thinned,
cat. £1000. SG58

Was £20
Now £15
GB0058UX



1847-54 6d Purple,
3 margins, good
used, a couple of
minor faults. SG60

Was £115
Now £86.25
GB0060UX



1855 4d Carmine,
small garter, slightly
blued glazed paper,
good to fine used,
minor fault. SG62a

Was £75
Now £56.25
GB0062AUX



1862-64 4d Pale-
red, wmk large
garter, good to fine
used. SG80

Was £20
Now £15
GB0080UA



1863-64 4d Hairlines
variety, both shades,
in pairs, fine used for
the type. SG81-82

Was £150
Now £112.50
GB0081U2P



1862-64 1/- Plate
2, both shades,
good to fine used.
SG89-90

Was £125
Now £93.75
GB0089U2



1865-67 4d Dull-
vermilion, plate
7 wing marginal
horiz. pair, fine used,
couple faults. SG93

Was £55
Now £41.25
GB0093UW2X



1873-80 3d Deep-
rose, plate 10, wing
marginal, good to
fine used. SG102

Was £20
Now £15
GB0102JUW



1867-80 3d Rose,
plate 4, good to fine
used. SG103

Was £50
Now £37.50
GB0103DU



1868-80 3d Rose,
plate 5, wing
marginal, fine used.
SG103

Was £15
Now £11.25
GB0103EUW



1872-80 3d Rose,
plate 8, wing
marginal, fine cds
used. SG103

Was £15
Now £11.25
GB0103HUW



1869-80 6d Mauve,
plate 8, wing margin
example used
on tidy fragment.
SG109

Was £30
Now £22.50
GB0109HUWFR



1867 6d Mauve,
without hyphen,
plate 9, good
used wing margin
example. SG109

Was £20
Now £15
GB0109IUW



1867-80 6d Mauve,
without hyphen,
plate 8, good to fine
used. SG109

Was £20
Now £15
GB0109U



1867-80 9d Straw,
plate 4, average
used. SG110

Was £30
Now £22.50
GB0110DU



1873-80 1/- Green,
plate 7, good to fine
used. SG117

Was £25
Now £18.75
GB0117GU



1867-80 1/- Green,
plate 4, wmk spray,
good to fine used.
SG117

Was £25
Now £18.75
GB0117UA



1872-73 6d
Chestnut, plate 11,
good to fine used.
SG122a

Was £15
Now £11.25
GB0122AUK



1873 6d Grey, plate
12, good to fine
used. SG125

Was £40
Now £30
GB0125LU1



1867-83 5/- Rose, used spacefiller example of our choice. SG126
Was £45
Now £33.75
GB0126UX



1867-83 5/- Pale-rose, plate 1, average used, faulty. SG127
Was £25
Now £18.75
GB0127UX



1875-80 2-1/2d Rosy-mauve / white ppr, all 3 plates, good to fine used. SG139
Was £100
Now £75
GB0139U3



1876-80 2-1/2d Rosy-mauve, plate 7, good to fine used. SG141
Was £15
Now £11.25
GB0141UG



1876-80 2-1/2d Rosy-mauve, plate 9, good to fine used. SG141
Was £20
Now £15
GB0141UI



1878-80 2-1/2d Rosy-mauve, plate 11, horizontal pair, good used. SG141
Was £20
Now £15
GB0141UK2



1875-80 3d Pale-rose, plate 17, spray of rose wmk, fresh mtd mint. Cut down wing-marginal. SG144
Was £130
Now £97.50
GB0144MMX



1876-80 6d Grey, plate 16, wing marginal, fine cds used, pulled perf. SG147
Was £15
Now £11.25
GB0147UPHX



1877-80 4d Sage-green, plate 16, good used. SG153
Was £35
Now £26.25
GB0153UP



1881-83 2-1/2d Blue, all 3 dies (21 faulty), good to fine used. SG157
Was £20
Now £15
GB0157U3X



1883 3d, 6d Surcharges, both fine used. SG159, 162
Was £105
Now £78.75
GB0159U2



1880-83 4d Grey-brown, both plates, good to fine used, minute tone. SG160
Was £35
Now £26.25
GB0160U2X



1881-83 6d Grey, both dies, good to fine used, minor faults. SG161
Was £25
Now £18.75
GB0161U2X



1881 1d Pale-lilac, 14 dots, good to fine used. SG171
Was £16
Now £12
GB0171U



1883-84 2/6d Lilac / white ppr, fine used. SG178
Was £55
Now £41.25
GB0178U1



1883-84 2/6d Lilac, cds used at Constantinople, minor faults. SG178 (Z143)
Was £32
Now £24
GB0178UCX



1883-84 2/6d Deep-lilac / lightly blued ppr, good to fine used, couple trimmed perfs. SG179a
Was £650
Now £487.50
GB0179AUX



1883-84 5/- Crimson, fine cds used. SG181
Was £85
Now £63.75
GB0181U



1884 2-1/2d Lilac, used horizontal strip of 3. SG190
Was £15
Now £11.25
GB0190U3



1883 6d Dull-green, fine cds used, a few minor tone spots. SG194
Was £35
Now £26.25
GB0194UX



1883 9d Dull-green, wmk inverted, fine cds used - a rare variety of a good stamp. SG195wi
Was £300
Now £225
GB0195WIU



1887-92 1/2d Vermillion, control number pair (our pick), good to fine used. SG197
Was £9
Now £6.75
GB0197U2



1887-92 1/- Dull-green, horiz pair, good used, creased. SG211
Was £30
Now £22.50
GB0211U2X



1900 1/2d Blue-green, fresh mtd mint marginal control 'R' example. SG213
Was £8
Now £6
GB0213MMR



1890 1/- Dull-green, GOVT PARCELS, good used, minor tone, cat. £275. SGO68
Was £20
Now £15
GB00068UX



1867-81 5/- Rose, plate 2, used with Valparaiso 'C30' duplex. SGZ88
Was £350
Now £262.50
GBCHILE0088U



1902 1d Scarlet, control marginal example (our pick), u/m. SG219
Was £6
Now £4.50
GB0219MC



1902 1-1/2d Slate-purple & bluish-green (chalky), marginal single, u/m. SG224
Was £45
Now £33.75
GB0224MA



1911-12 1/2d Bright-green, die B, wmk inverted pane of 6, u/m. Some minor faults. SG325wi
Was £75
Now £56.25
GB0325WM6X



1911 1d Carmine-red, die 1A, corner marginal control strip of 3, fresh mtd mint. SG327
Was £150
Now £112.50
GB0327MM2A11A



1911 1d Carmine, die B, corner marginal control block of 6, fresh mtd mint. SG329
Was £90
Now £67.50
GB0329MM6A11A



1911-12 1d Scarlet, die B, booklet pane of 6, typical trimmed perfs, a little tired. SG332, NB4
Was £90
Now £67.50
GB0332M6BX



1912 1d Bright-scarlet, coil join pair, u/m. SG341, N11g
Was £75
Now £56.25
GB0341M2



1912 1d Bright-scarlet, corner marginal B11 control strip of 3, fresh mtd mint. SG341
Was £45
Now £33.75
GB0341MM3B11



1912 1d Bright-scarlet, corner marginal control block of 4, fresh mtd mint. SG341
Was £40
Now £30
GB0341MM4B11A



1912 1d Scarlet, block of 4, cds used. SG342
Was £5
Now £3.75
GB0342U4



1912 1/2d Green, very pale shade, M19 marginal control example, mtd mint. SG351var
Was £150
Now £112.50
GB0351MMM19



1913 1/2d Booklet pane of 6, hole punched & cds used, NB6, type I, rare. SG351
Was £120
Now £90
GB0351UBK



1912-26 1/2d Green, 'H16' control marginal single, '1' double print, lightly mtd mint. SG351
Was £35
Now £26.25
GB0351VARMMLH16



1912-26 1-1/2d Red-brown, par pane, mtd on label, stamps u/m. SG362b
Was £75
Now £56.25
GB0362BMP



1923 1-1/2d
Chestnut, used
in CHILE on tidy
fragment with
CABOTAJE (coastal
mail) cancel. SG364
Was £35
Now £26.25
GB0364UFR



1913-24 4d Deep
grey-green, K18
control marginal,
mtd mint, minute gu
thin. SG378, N23(7)
Was £45
Now £33.75
GB0378MMK18



1920-24 6d
Reddish-purple,
perf 14, good to fine
used. SG385a
Was £35
Now £26.25
GB0385AU



1915 5/- Bright
carmine, DLR ptng,
average used.
SG409
Was £50
Now £37.50
GB0409UA



1924 1-1/2d
Fragmentary
booklet pane (2
stamps + 2 labels),
block cypher, u/m.
SG420
Was £30
Now £22.50
GB0420M2A



1924-26 5d Brown,
'U34' control
marginal single, mtd
mint. SG425
Was £225
Now £168.75
GB0425MMU34



1924-26 1/- Bistre-
brown, 'K29' control
marginal single, mtd
mint, scarce. SG429
Was £100
Now £75
GB0429MMK29



1929 1/2d PUC,
control K29
marginal example,
u/m. SG434
Was £7
Now £5.25
GB0434MK29



1934-36 1d Scarlet,
corner marginal
control V34 block
(cylinder 6R dot),
u/m. SG440
Was £20
Now £15
GB0440M4A



1934-36 1d Scarlet,
control marginal V34
block (cylinder 25
dot), u/m. SG440
Was £35
Now £26.25
GB0440M4B



1934 1-1/2d Red-
brown, intermediate
with 2 labels, u/m,
trimmed at base.
SG441
Was £45
Now £33.75
GB0441M2



1934-36 1-1/2d
Red-brown, corner
control V34 block
(cylinder 100 dot),
u/m. SG441
Was £18
Now £13.50
GB0441M4A



1934 1-1/2d Red-
brown, V34 / cyl.
4 corner marginal
block of 6, u/m.
SG441
Was £18
Now £13.50
GB0441M6A



1934 1-1/2d Red-
brown, vertical
paper join pair, with
top stamp double
thickness, mtd mint.
SG441
Was £45
Now £33.75
GB0441MM2V



1934-36 1-1/2d
Red-brown, corner
control V34 block
(cylinder 47 no dot),
mtd mint. SG441
Was £50
Now £37.50
GB0441MM4A



1934-36 1-1/2d
Red-brown, corner
control V34 block
(cylinder 98 dot),
mtd mint. SG441
Was £20
Now £15
GB0441MM4B



1934 5/- Bright rose-
red, re-engraved,
fine example, mint
no gum. SG451
Was £70
Now £52.50
GB0451MNG



1934 5/- Bright rose-
red, re-engraved,
good to fine used.
SG451
Was £20
Now £15
GB0451U



1934 10/- Indigo,
re-engraved, fine
example, mint no
gum. SG452
Was £125
Now £93.75
GB0452MNG



1934 10/- Indigo, re-
engraved, good to
fine used. SG452
Was £30
Now £22.50
GB0452U



1935 2/- Bovril
skeleton booklet.
SGBB17
Was £7
Now £5.25
GBBB0017MX



1935 3/- 'National
Group' skeleton
booklet. SGBB29
Was £7
Now £5.25
GBBB0029MXA



1920 3/6d Skeleton
bkt (no stamps).
SGBB30
Was £75
Now £56.25
GBBB0030MX



1935 5/- 'London
and Lancashire'
skeleton booklet.
SGBB37
Was £9
Now £6.75
GBBB0037MX



1914 2d Agate,
gutter pair, u/m.
SGD4
Was £30
Now £22.50
GBD0004M2



1924 3d Dull-
violet, B24 control
marginal block of
6, mtd (in selvage)
mint. SGD14
Was £48
Now £36
GBD0014MM6B24



1936 1/2d Green,
coil strip of 5, u/m.
SG457
Was £20
Now £15
GB0457M5



1938-47 1d Scarlet,
wmk sideways, strip
of 5, u/m. SG463a
Was £65
Now £48.75
GB0463AM5



1938 1d Scarlet,
wmk sideways coil
lead. SG463a
Was £50
Now £37.50
GB0463AMCL



1937 1d Scarlet,
cylinder F1 pane of
6, trimmed at right,
u/m, SPEC QB10,
SG463
Was £34
Now £25.50
GB0463M6F1



1937 1d Scarlet
'E/39' control
cylinder 27 dot
block of 6, lightly
mtd mint. SG463
Was £75
Now £56.25
GB0463MM6E39



1937 1-1/2d Red-
brown, booklet
pane of 4 + 2 labels,
cylinder G18, u/m.
Typical perf trim.
SG464b
Was £45
Now £33.75
GB0464BMA



1937 1-1/2d Red-
brown, booklet
pane of 4 + 2 labels,
u/m. Typical perf
trim, missing selv.
SG464b
Was £20
Now £15
GB0464BMX



1937-47 1-1/2d
Red-brown, 'G19'
cylinder block of 6,
some per trim, u/m.
SG464c, QB21
Was £20
Now £15
GB0464CM6A



1937-47 1-1/2d
Red-brown, cylinder
G8, dot or no dot,
block of 6, trimmed
at right. SG464,
QB21
Was £30
Now £22.50
GB0464M6A



1937 1-1/2d Red-
brown, cylinder G44,
block of 6, trimmed
at right. SG464,
QB21
Was £45
Now £33.75
GB0464M6B



1937-47 2-1/2d
Ultramarine, misperp
vertical pair, u/m.
SG466var
Was £40
Now £30
GB0466VARM2



1939-47 6d Purple,
cylinder 41 no dot
block of 6, u/m.
SG470
Was £15
Now £11.25
GB0470M6



1939-47 6d Purple,
block of 6 with
blade flaw visible in
margin, u/m. SG470
Was £42
Now £31.50
GB0470VARM6



1939-47 7d
Emerald-green, 'e/p'
type cylinder 12 no
dot block of 6, u/m.
SG471
Was £85
Now £63.75
GB0471M6EP



1939 8d Bright-carmine, control F/39, cyl 1 (no dot) block of 6, lightly mtd mint. SG472
Was £50
Now £37.50
GB0472MML6F39



1939 9d Deep olive-green, corner marginal 5 dot cylinder block of 6, u/m. SG473
Was £70
Now £52.50
GB0473M6A



1939-47 10d Turquoise-blue, cylinder 7 (type6) no dot, block of 6, u/m, cat. £200+. SG474
Was £140
Now £105
GB0474M6A



1939-47 1 1/2d Bistre-brown, cylinder 17 dot block of 6, u/m. SG475
Was £150
Now £112.50
GB0475M6



1941 1 1/2d Pale-green, cylinder 152 dot block of 6, u/m. SG485
Was £9
Now £6.75
GB0485M6A



1941-42 1 1/2d Pale-green, cylinder 80 dot block of 6, u/m, trimmed at left. SG485, QB4
Was £35
Now £26.25
GB0485M6X



1942 1d Pale-scarlet, wmk sideways, coil lead with 1 stamp attached. SG486a
Was £24
Now £18
GB0486AMCL



1941-42 1d Pale-scarlet, control O45, cylinder 106 no dot block of 6, u/m. SG486
Was £50
Now £37.50
GB0486M6A



1941-42 1d Pale-scarlet, control S46, cylinder 124 dot block of 6, u/m. SG486
Was £20
Now £15
GB0486M6B



1941-42 1d Pale-scarlet, control L42, cylinder 76 dot block of 6, u/m. Minor fault. SG486
Was £20
Now £15
GB0486M6X



1941-42 1d Pale-scarlet, cylinder block of 6 (our choice), mtd mint. SG486
Was £20
Now £15
GB0486MM6



1941-42 2d Pale-orange, cylinder pane of 6, u/m, trimmed edge. SG488, QB30
Was £30
Now £22.50
GB0488M6X



1941-42 2-1/2d Light-ultramarine, 'R/45' control cyl 95 dot block of 6, u/m. SG489
Was £15
Now £11.25
GB0489M6R45



1941 2-1/2d Light-ultra, pane QB33a, perf le, u/m. SG489
Was £15
Now £11.25
GB0489MA



1941-42 3d Pale-violet, coil join strip of 4, u/m. SG490
Was £15
Now £11.25
GB0490M4CJ



1946 2-1/2d Victory, S46 control, cyl 7, dot block of 6, u/m. SG491
Was £10
Now £7.50
GB0491N6S46A



1946 2-1/2d Ultramarine (victory), cylinder block of 8, u/m. SG491
Was £20
Now £15
GB0491M8



1946 3d Victory, cyl 4 no dot block of 4 containing 'seven berries' variety, u/m. SG492+a
Was £35
Now £26.25
GB0492AM4



1946 3d Victory, S/46, cyl 4 control block of 6, u/m. A rare block. SG492
Was £150
Now £112.50
GB0492M6S46



1948 Silver Wedding, 2-1/2d in block of 4, £1 single, both lightly mtd mint. SG493-94
Was £20
Now £15
GB0493MML4



1948 3d Violet,
'crown flaw' within
cylinder block of 6,
u/m. SG496a
Was £65
Now £48.75
GB0496AM6A



1948 6d Olympics,
corner block of
6 displaying HLP
'retouch,' u/m.
SG497var
Was £95
Now £71.25
GB0497VARM6



1949 3d Violet
(UPU), E/P cylinder
block of 6, u/m.
SG500
Was £35
Now £26.25
GB0500M6A



1949 6d Bright-
purple (UPU)
cylinder 2, no dot
block of 6, u/m.
SG501
Was £15
Now £11.25
GB0501M6A



1951-52 1/2d Pale-
orange, coil join pair,
u/m. SG503
Was £5
Now £3.75
GB0503M2CJ



1951-52 2-1/2d Pale
scarlet, cylinder 275
dot block of 6, u/m.
SG507
Was £20
Now £15
GB0507M6A



1951-52 2-1/2d Pale
scarlet, cylinder 276
dot block of 6, u/m.
SG507
Was £15
Now £11.25
GB0507M6B



1951-52 2-1/2d Pale
scarlet, cylinder 273
dot block of 6, u/m.
SG507
Was £20
Now £15
GB0507M6C



1951 2/6d Victory,
u/m. SG509
Was £4
Now £3
GB0509M1



1937 3d Dull-violet,
A37 marginal
control mint. SGD22
Was £5
Now £3.75
GBD0022MMA37



1937-38 3d Violet,
marginal control
F39, mtd mint. Cat.
£250. SGD30
Was £125
Now £93.75
GBD0030MM1



1953 5d Brown, thin
paper, cylinder 1,
dot block of 6, u/m.
SG522
Was £60
Now £45
GB0522M6



1952 1/- Bistre-
brown, 'school
SPECIMEN,' u/m.
SG529
Was £25
Now £18.75
GB0529SM



1958 £1 Castle,
Waterlow, good
used. SG539
Was £5
Now £3.75
GB0539U1



1957 2-1/2d
Carmine-red,
cylinder J5 dot pane
of 6, u/m. SB81,
GS544b
Was £25
Now £18.75
GB0544BM6A



1956-58 7d Bright
green, Edward's
Crown, cyl 2 corner
marginal block of 6,
u/m. SG549
Was £240
Now £180
GB0549M6



1955 9d Bronze-
green (Edward), cyl
1, dot block of 6,
u/m. SG551
Was £120
Now £90
GB0551M6



1955 10d Prussian-
blue (Edward), cyl 1,
dot block of 6, u/m.
SG552
Was £120
Now £90
GB0552M6



1955-58 10d
Prussian blue,
cylinder 1 dot block
of 6, u/m, LR stamp
creased. SG552
Was £50
Now £37.50
GB0552M6A



1957 Double
'poached egg' test
label produced
to test automatic
affixing machines,
u/m.
Was £10
Now £7.50
GB0559TLM



1958 2d Light red-brown, cyl H6 pane of 6, mtd mint, cat. £500. SB79, SG573
Was £195
Now £146.25
GB0573MM6



1958 2-1/2d Carmine-red, white cylinder pane, u/m. SB83, SG574
Was £80
Now £60
GB0574M6A



1958 2-1/2d Carmine-red, cylinder 4 dot pane of 6, u/m. SB83, SG574
Was £120
Now £90
GB0574M6B



1958-65 3d Deep-lilac, 'phantom R' retouch block of 4, mtd mint. SG575da
Was £20
Now £15
GB0575DAMM4



1958-65 1/6d Grey-blue, cylinder 1, no dot block of 6, u/m. SG596
Was £30
Now £22.50
GB0586M6A



1961 3d Deep-lilac, three graphite lines variety, u/m. SG592c
Was £50
Now £37.50
GB0592CM



1963 £1 Castle, Bradbury Wilkinson, fine used. SG598a
Was £4
Now £3
GB0598AU



1959 4d Ultramarine, corner marginal phosphor graphite block of 4, u/m. SG608
Was £45
Now £33.75
GB0608M4



1960-67 1/2d Orange-red, borad band, in block of 4, u/m. SG610, SP512c
Was £30
Now £22.50
GB0610M4



1960+ Selection of 6 Wilding broad band varieties, u/m (our pick). SG610+
Was £35
Now £26.25
GB0610NETC



1960-67 1d, 3d Booklet type I (1/2v) cut, u/m. SG611m, SB52
Was £50
Now £37.50
GB0611MM



1960 1-1/2d Green, paper join corner marginal block of 6, u/m. SG612var
Was £60
Now £45
GB0612M6VAR



1960-67 2d Light red-brown, broad band right, marginal block of 4, u/m. SG613
Was £40
Now £30
GB0613M4



1961-67 2-1/2d Carmine-red, broad band right, marginal block of 4, u/m. SG614a
Was £25
Now £18.75
GB0614AM4



1960-67 3d Deep-lilac, 'phantom R' variety in corner marginal block of 4, u/m. SG615a (615aa)
Was £30
Now £22.50
GB0615AM4



1961 4d Ultramarine, broad band, cylinder booklet pane of 4, u/m, rare. SP110ab, SG616al
Was £250
Now £187.50
GB0616ALMA



1961 4d Ultramarine, cylinder booklet pane of 6, u/m. SG616al
Was £20
Now £15
GB0616ALMB



1961-67 4-1/2d Chestnut, blued cream, broad band, marginal block of 4, u/m. SG616b
Was £50
Now £37.50
GB0616BM4



1966 9d Bronze-green, corner cylinder block of 6, 'extra perf strike,' u/m. SPS126var, SG617C
Was £40
Now £30
GB0617CVARM6



1960 1/6d Communications conference, 'diadem flaw,' u/m. SG622var, W15a
Was £20
Now £15
GB0622VARM



1961 3d PO Savings Bank, horizontal pair displaying perf through margin, u/m. SG624Eb
Was £25
Now £18.75
GB0624EBM2



1963 1/6d Lifeboat conference, phosphor front & back variety, u/m. SG641pvar
Was £75
Now £56.25
GB0641PVARM



1963 3d Red Cross, 2 phosphor band variety (instead of 3), u/m. SG642pvar, Wp37b
Was £75
Now £56.25
GB0642PMV



1963 1/6d Compac, '2 and hint of a 3rd phosphor bands' variety, u/m. SG645pvar
Was £25
Now £18.75
GB0645PMV



1964 2-1/2d Geographical Congress (phos), 'line repaired' variety in u/m marginal pair. SG651pvar
Was £5
Now £3.75
GB0651PM2V



1964 4d Geographical Congress, 'scarred neck' variety in vert marginal pair, u/m. SG652var
Was £5
Now £3.75
GB0652M2V



1965 4d Churchill, 'vertical scratch' flaw in u/m vertical marginal pair. SG661var, W56b
Was £4
Now £3
GB0661M2V



1965 3d UNO, 'broken circle' variety in vertical pair with normal, u/m. SG681a
Was £30
Now £22.50
GB0681AM2



1965 3d UNO, 'lake in Russia' variety in vertical pair with normal, u/m. SG681b
Was £30
Now £22.50
GB0681BM2



1965 1/6d ITU, phosphor, 'extra red dot' variety in vert pair with normal, u/m. SG684pvar
Was £25
Now £18.75
GB0684PVARM2



1966 3d Christmas, broad band, horiz marginal pair, u/m. SG713pvar
Was £50
Now £37.50
GB0713PVARM2



1968 Borad band centre booklet panes, both orientations, u/m. SG724l, UB5a
Was £35
Now £26.25
GB0724LM2



1968 Booklet pane, missing phosphor, u/m. SG724ly, UB5
Was £50
Now £37.50
GB0724LYM



1968 1d Olive, corner marginal block of 6, missing phosphor, u/m. SG724var
Was £50
Now £37.50
GB0724VARM6



1968 3d Violet, cylinder 4 dot, 2 wide band block of 6, u/m - very unusual. SG730
Was £35
Now £26.25
GB0730M6



1967 4d Deep-sepia, gum arabic, cyl 8, no dot block of 6, missing phosphor, u/m. SG731
Was £50
Now £37.50
GB0731VARM6



1967 4d Deep-sepia, cyl 14 dot block of 6, AOP phosphor wash, u/m. SG731
Was £30
Now £22.50
GB0731VARM6A



1968 4d Deep-sepia, PVA gum pane, missing phosphor, u/m. SG731
Was £30
Now £22.50
GB0731VARM6B



1968 4d Deep-sepia, gum arabic pane, missing phosphor, u/m. SG731
Was £25
Now £18.75
GB0731VARM6C



1969 4d Bright-vermillion, SPECIMEN, u/m. SG733
Was £75
Now £56.25
GB0733SM



1969 4d Vertical pair, imperf top margin, u/m, MCC
cat. £245. SG733var
Was £175
Now £131.25
GB0733VARM2



1969 4d Bright-vermillion, gum arabic pane of 6, u/m. SG733var
Was £60
Now £45
GB0733VARM6



1969 4d Bright-vermillion, missing phosphor, in pair with 1d broad band, u/m. SG734var
Was £45
Now £33.75
GB0734VARM2



1968-70 5d Royal-blue, booklet pane missing phosphor, u/m. SG735var
Was £40
Now £30
GB0735VARM6



1967 1/6d Two examples with PVA gum, one being a broad band, u/m. SG743EVvar
Was £75
Now £56.25
GB0743EVARM2



1967 1/6d Broad band centre, pale type, u/m. SG743var
Was £75
Now £56.25
GB0743VARM



1968 Discovery booklet proof cover. SGLP48
Was £20
Now £15
GB0752PRBK



Television, one broad band variety, u/m. SG755var
Was £75
Now £56.25
GB0755VARM



1968 9d Aberfeldy bridge, corner marginal block of 4, broad phosphor band left, u/m. SG764var
Was £48
Now £36
GB0764VARM4



1969 5d Durham & St. Giles, vertical dry print pair, u/m. SG796/98var
Was £25
Now £18.75
GB0796VARM2



1969 1/- Prince Charles, diagonal phosphor band, u/m. SG806var
Was £40
Now £30
GB0806VARM



1969 1/6d Ghandi centenary, corner marginal block of 6 containing 'tooth flaw,' u/m. SG807var
Was £15
Now £11.25
GB0807VARM



1969 1/6d Christmas, marginal strip of 3, right stamp AOP, u/m. SG812
Was £40
Now £30
GB0812VARM3



1970 1/6d Ulster Thatch, horizontal pair, one with 'paper join' variety, u/m. SG818
Was £35
Now £26.25
GB0818VARM2



1970 5d Penny Black, misperf, u/m. SG835var
Was £25
Now £18.75
GB0835VARM



1971 7-1/2p Ulster, broad band, u/m. SG882var
Was £4
Now £3
GB0882MV



1971 7-1/2p Roman Centurion, grey colour shift, u/m. Unusual. SG888var
Was £50
Now £37.50
GB0888VARM



1971 7-1/2p Christmas, misplaced embossing error (4mm down, 2mm right), block of 4, u/m. SG896var
Was £32
Now £24
GB0896M4V



1971 7-1/2p Ride of the Magi, red offset on reverse, u/m. Normal provided for comparison. SG896va
Was £45
Now £33.75
GB0896VARM



1972 9p Scott, missing phosphor, u/m. SG900ey
Was £200
Now £150
GB0900EYM



1972 7-1/2p HM
Coastguard, missing
phosphor, u/m.
SG902ey
Was £180
Now £135
GB0902EYM



1972 7-1/2p BBC,
cylinder block of 6,
missing phosphor,
u/m. SG911y
Was £50
Now £37.50
GB0911YM6



1972 3p Angel
playing lute, unlisted
'broadband' variety,
u/m. SG914var
Was £30
Now £22.50
GB0914VARM



1972 3p Wedding,
pos block of 6
containing varieties,
u/m. SG916var
Was £5
Now £3.75
GB0916M6V



1973 5p Drake,
gold omitted, u/m.
SG925a
Was £195
Now £146.25
GB0925AM



1975 8p Sailing,
black omitted, u/m.
SG981a
Was £80
Now £60
GB0981AM



1975 8p Sailing,
very dry print of
blue, u/m. SG981var
Was £15
Now £11.25
GB0981VARM



1976 8-1/2p Hewing
coal, 'moving
hands' shift variety,
gutter pair, u/m.
SG1001var
Was £35
Now £26.25
GB1001VARM2



1982 19-1/2p
Steiner & Co.,
perf shift left, u/m.
SG1193var
Was £20
Now £15
GB1193VARM



1988 £1.50
Caernarfon Castle,
horizontal pair
displaying minor
misperf, u/m.
SG1411var
Was £40
Now £30
GB1411VARM2



1994 £1
Carrickfergus, re-
etched, vertical pair
displaying offset on
gum, u/m. SG1611r
Was £25
Now £18.75
GB1611RM2V



1992-95 £5 Windsor
Castle, block of 4
with Queen's head
offset on reverse.
SG1614var
Was £100
Now £75
GB1614VARM4



1998 2nd, 1st
'Dagger Perfs', both
forgeries, u/m -
good spacefillers,
cat. £600. SG2039b-
40b
Was £60
Now £45
GB2039BM2F



2003 'Occasions'
greetings stamps,
se-tenant block,
u/m, light offset
variety on rev.
SG2337avar
Was £90
Now £67.50
GB2337AMV



January 1967
4/6d Phosphor
bkt, 1d pane no
phosphor (unlisted).
SGL64pvar
Was £60
Now £45
GBBL0064PVAR



July 1969 4/6d
The Dreadnought,
voucher (empty)
booklet, stamped
SPECIMEN. SGLP52s
Was £12
Now £9
GBBLP0052S



1961 (No date)
2/- Booklet, panes
reversed. SGN3var
Was £125
Now £93.75
GBBN0003VAR



April 1961 2/-
Phosphor booklet,
3d pane missing
phosphor. SGN4pa
Was £175
Now £131.25
GBBN0004PA



1968 (January) 2/-
Phosphor booklet,
phosphor missing on
4d pane. SGN31pd
Was £20
Now £15
GBBN0031PD



January 1969
2/- Booklet, 'For
You, At You' type.
SGNP33a
Was £15
Now £11.25
GBBNP0033A



1967-68 Set of 6/-
Machin booklets,
less QP37. SGQP28-
36

Was £225
Now £168.75

GBBQP0028SH



August 1968
6/- Peregrine
Falcon, 3rd pane
missing phosphor.
SGQP40var

Was £15
Now £11.25

GBBQP0040VAR



August 1962
10/- Booklet, with
inverted interleaf,
rare. SGX4

Was £180
Now £135

GBBX0004VAR



1968 10/- Drake,
unissued booklet
cover. Rare

Was £100
Now £75

GBBXP0004Z



1986 50p Roman
theatre bkt.,
transposed band
error. SGFB37var

Was £35
Now £26.25

GBBFB0037VAR



1989 Comet bkt.,
phosphor shift
giving lower 15p
2 bands, u/m.
SGFB56var

Was £20
Now £15

GBBFB0056VARM



1978 70p Horse-
shoeing cylinder
bkt. SGFD2A

Was £25
Now £18.75

GBBFD0002A



1978 50p Dry-stone-
walling bkt., left
margin, typical perfs.
SGFD4A

Was £95
Now £71.25

GBBFD0004A



1986 £1.20 National
Gallery cylinder
bkt., missing
phosphor. SGFJ5var

Was £60
Now £45

GBBFJ0005VAR



1987 £1.30
Jolly Postman
cylinder B37 bkt.,
missing phosphor.
SGFL11Avar

Was £40
Now £30

GBBFL0011AVAR



1983 £1.46
Seahorse, corrected
rate, cyl. B26 bkt.
SGFO0001Aa

Was £60
Now £45

GBBF00001AA



1983 £1.50
Corrected rates bkt.,
u/m. SGFS1aA

Was £30
Now £22.50

GBBFS0001AAM



1986 £1.80 Garden
path, cyl. B13 bkt.,
corrected. Scarce.
SGFU3B

Was £150
Now £112.50

GBBFU0003B



1993-94 £2
Motorised cycle-
carrier, miscut
cylinder pane. Rare.
SGFW1var

Was £50
Now £37.50

GBBFW0001VAR



1996 £2 Original
rate booklet, missing
phosphor, typical
slight trim at left.
SGFW9var

Was £125
Now £93.75

GBBFW0009VAR



2000 £2 Cylinder
booklet displaying
phosphor shift
giving stamps brad
band rather than 2
bands. S

Was £75
Now £56.25

GBBFW0012VARM



2001 1st 'A' round
tab bkt., u/m.
SGGC1a

Was £40
Now £30

GBBGC0001AM



1988 1st Class pane
of 4 19p stamps
housed in 2nd class
booklet makeup
error. SGGD1var

Was £495
Now £371.25

GBBGD0001VAR



1993 2nd Class
(x10) Questa
booklet reprint
with tropical gum
- believed to be a
forgery. SG11A(f)

Was £49
Now £36.75

GBBHC0011AF



1957 2/6d Purple,
fine used block of 4.
SGD54

Was £20
Now £15

GBD0054U4



1960-63 1-1/2d
Green, block of 4,
cds used, adhesions
on rev. SGD58
Was £5
Now £3.75
GBD0058U4X



1982 Set in cylinder
blocks of 6, u/m.
SGD90-101
Was £90
Now £67.50
GBD0090M6



GB, 1971 5p
Broad band pane
of 4, u/m. SGUSB3
Was £100
Now £75
GBUSB0003M



1971 1/2p & 2p Se-
tenant vertical pane
of 4, u/m. Stripped
phosphor, perf trim.
SG841L
Was £6
Now £4.50
GBX0841LM



1971 1/2p
Turquoise,
varnished paper
cyl block of 6, u/m.
SGX841
Was £15
Now £11.25
GBX0841M6VAR



1971 FCP, PVA set,
including 1/2p left
band, u/m. SGX841,
etc
Was £70
Now £52.50
GBX0841METC



1971 1/2p
Turquoise, dry
print variety, u/m.
SGX841
Was £35
Now £26.25
GBX0841MVARA



1971 Coil strip,
wide band left, u/m.
SG841Nvar
Was £45
Now £33.75
GBX0841NVARM



GB, 1971 5p Coil,
broad centre
bands variety, u/m.
SGX841var
Was £45
Now £33.75
GBX0841VARM



GB, 1971 1-1/2p
Uncoated, u/m.
SGX848a
Was £70
Now £52.50
GBX0848AM



1980 Wedgewood
PSB pane
displaying
orange shift, u/m.
SG849Nvar
Was £35
Now £26.25
GBX0849NVARM



1971-73 3p Ultra,
OCP/PVA, missing
phosphor, block of
4, u/m. SGX855var,
U101b
Was £15
Now £11.25
GBX0855M4V



1973 3p Ultra
PVAD, corner
marginal block of 10
containing varieties.
SGX856var
Was £20
Now £15
GBX0856M10V



GB, 1971 3p OCP
PVA, vertical coil
leader, u/m. SGX856
Was £95
Now £71.25
GBX0856MC



1971 3p OCP, cyl
2 dot block of 6,
missing phosphor,
u/m. SGX856var,
U103var
Was £90
Now £67.50
GBX0856VARM6



1971 3p FCP PVA,
cyl block of 6,
missing phosphor,
u/m. SGX856var,
U103var
Was £60
Now £45
GBX0856VARM6A



GB, 1971 4p PVA,
misperf single, u/m.
SGX861var
Was £25
Now £18.75
GBX0861VARM



1973 4-1/2p Grey-
blue, pane of 5,
'pale phosphor
under ink' variety,
u/m. SGX865var
Was £100
Now £75
GBX0865VARM5



1979 8p Rosine &
10p orange-brown,
in vertical pair from
mis-cut bklt pane,
u/m. SGX879 / 886
Was £10
Now £7.50
GBX0879M2



1978 8p Rosine,
phosphor bands
partly omitted, u/m.
SGX879var
Was £9
Now £6.75
GBX0879MV



1980 10p Chambon,
gutter pair, u/m.
SGX888
Was £5
Now £3.75
GBX0888M2



1976 10-1/2p
Yellow, AOP, cylinder
1 no dot pane of 6,
u/m. Rare. SGX890
Was £150
Now £112.50
GBX0890M6



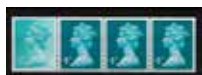
1986 12p, 31p Strip
of 3 from booklet,
perf shift, u/m.
SG897, 919
Was £15
Now £11.25
GBX0897MFRVAR



1983 12-1/2p & 16p
Missing phosphor
in vertical pair, u/m.
SGX898var, X949var
Was £65
Now £48.75
GBX0898VARM2



1988 14p Deep-
blue, booklet pane
in booklet, phosphor
omitted, u/m.
SGX903qy
Was £12
Now £9
GBX0903QYMB



1981 PCP2 Glossy
waxed coil strip of 4,
u/m. SGX924l
Was £75
Now £56.25
GBX0924LM



1991 6p Yellow-
ochre, misplaced
phosphor bands
(wise left, narrow
right), block of 4,
u/m. SGX936
Was £6
Now £4.50
GBX0936M4V



1981 15-1/2p Pale-
violet, blade line
flaw behind portrait,
u/m. SGX948var
Was £15
Now £11.25
GBX0948MV



1971 16p Missing
phosphor, in
booklet pair, u/m.
SGX949var
Was £70
Now £52.50
GBX0949VARM2



1989 50p Ochre-
brown, AOP,
cylinder 4 dot block
of 6, u/m. Rare.
SGX992var
Was £695
Now £521.25
GBX0992VARM6



1986 20p Questa,
screened value,
vertical pair, u/m.
SGX1014
Was £45
Now £33.75
GBX1014M2



1999 1st Pane,
broad band at left,
u/m. SGY1667L
Was £95
Now £71.25
GBY1667LM



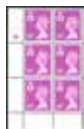
2011 1st Gold, frmr
MRL, missing source
and date codes, SG
mentioned, u/m.
SGU3018var
Was £75
Now £56.25
GBU3018VARM



1968-69 10M
5d Royal-blue,
corner block of 6
containing frame
flaw, u/m. SG7a
Was £15
Now £11.25
GBRM0007AM6



1987 18p Northern
Ireland, cylinder Q3
block of 6, u/m -
scarce. SGNI46
Was £120
Now £90
GBRNI0046M6



1991 39p Northern
Ireland, missing
phosphor cylinder
block of 6, u/m.
Spec. cat. listed.
SGNI68
Was £150
Now £112.50
GBRNI0068VARM6



1963 Scotland, 2
bands, cylinder 4 (no
dot) block of 6, u/m.
SGS1p
Was £90
Now £67.50
GBRS0001PM6



1958-67 6d Deep-
claret, cyl 1 no dot
number block of 6,
on cream ppr, u/m.
SGS3var
Was £30
Now £22.50
GBRS0003M6V



1971 5p Scotland,
FCP cylinder 3 (with
dot) block of 6, u/m,
MCC cat. £125.
SGS20
Was £80
Now £60
GBRS0020M6



1984 22p Scotland,
type II, cylinder
block of 6, u/m.
SGS48Ea
Was £150
Now £112.50
GBRS0048M6



1971 3p Wales,
block of 4,
phosphor omitted,
u/m. SGW14gy
Was £20
Now £15
GBRW0014GYM4



1971 3p Wales,
cylinder block of 6,
phosphor omitted,
u/m. SGW14GY
Was £60
Now £45
GBRW0014GYM6



1971 Wales 3p, broad band left, block of
4, u/m. SGW14var
Was £240 Now £180
GBRW0014VARM4



1975 5-1/2p Wales
FCP PVA cylinder
MCC, block of 6,
u/m. SGW20
Was £90
Now £67.50
GBRW0020M6



1974 5-1/2p Wales,
vertical marginal
strip of 4, AOP
heavy on 3rd stamp,
u/m. SGW20var
Was £95
Now £71.25
GBRW0020VARM4



1986 Wales 17p,
type 2 cylinder block
of 6, u/m. SGW44Ea
Was £185
Now £138.75
GBRW0044EAM6



1966 De La Rue
colour trials (3), u/m.
Was £8
Now £6
GBEY0DLRM



1950 Scotland,
Suna 'local', 'Boat
Run' ovpt, u/m.
Was £10
Now £7.50
GBLA1950AM



Alderney 1962-68
Border proofs (3
different).
Was £60
Now £45
GBZAL0000A3



Alderney 1967 3/-
Blue + vermillion,
horizontal pair, perf
columns omitted,
u/m. Newell#85var
Was £30
Now £22.50
GBZAL0085VARM2



Channel Is. 1948 1d
Liberatin, cyl type
63 block of 6, u/m.
SGC1
Was £35
Now £26.25
GBZCI0001M6



Channel Is. 1948
2-1/2d Ultramarine,
'crown flaw' within
corner block of
6, u/m. SGC2,
QCom13a
Was £30
Now £22.50
GBZCI0002VARM6



Herm 1961
Europa, various
ovtps in multiples,
u/m. Range H67-72
Was £25
Now £18.75
GBZHE0067METC



Herm 1961 Europa
imperf (less 4d),
u/m. H68-72
Was £18
Now £13.50
GBZHE0068IMSH



Herm 1962 Europa,
selection of B+W
printer's proofs, u/m.
H76pr-78pr
Was £50
Now £37.50
GBZHE0076PRM



IOM 1977 7p &
13p Anniversaries,
proof pair, misperf.
SG100pr, 102pr
Was £75
Now £56.25
GBZIM0100PRVAR2



IoM 1996 Dogs miniature sheet, missing
'AT WORK' error, u/m. SGMS725var
Was £125
Now £93.75
GBZIM0725MVAR

OR complete the order form:



Benham House, North Close, Folkestone CT20 3UH
www.thestampcentre.co.uk

[illegible]

PAYMENT DETAILS - Please write details clearly and distinctly, block capitals may be used



☐ I enclose a cheque made payable to 'The Stamp Centre' Or please debit my card:

[illegible]

Security code:

Last 3 digits from back of card

Card valid from: / Expiry: /

Name (as it appears on card):

Account no:**Shipping Address:****Postcode:**

Tel:

Billing Address (if different to shipping address above):

Postcode:

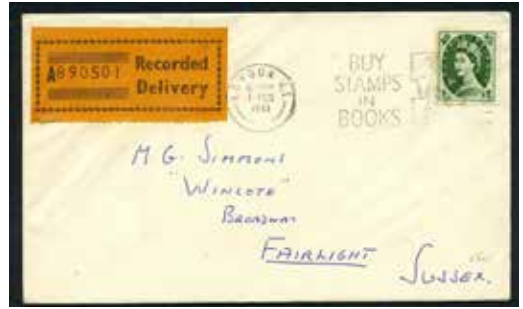
Email:

MEDIA CODE BL28



1946 Peace, used on FLEET MAIL FDC, carried by HMS Cormorant to Gibraltar. SG491-92

£120 GB0491UFDC3



1961 9d Bronze-green, used on first day recorded delivery service cover with label, rust. SG582

£85 GB0582UCVR

SALE - SEE PAGES 38 - 54

If undelivered, please return to:
Benham House, North Close, Shorncliffe Industrial Estate,
Folkestone, Kent, CT20 3UH

